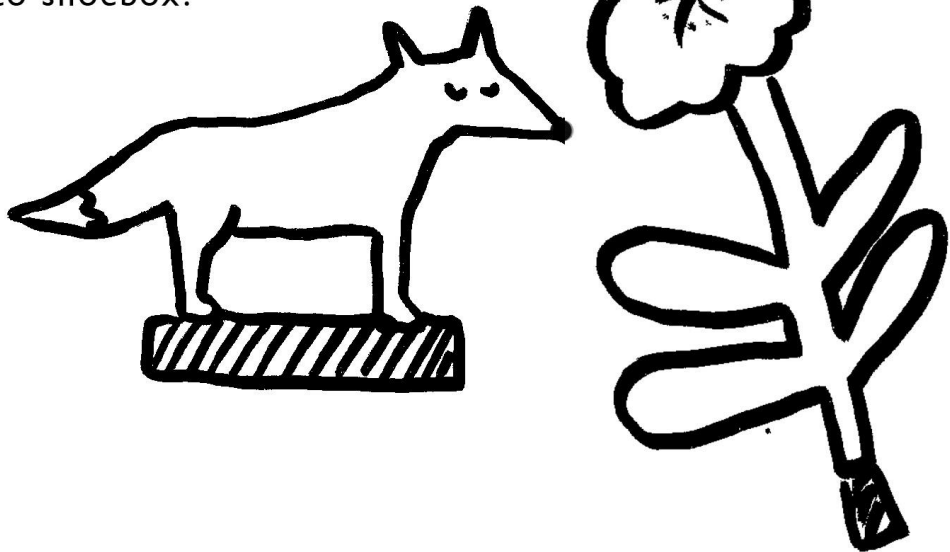
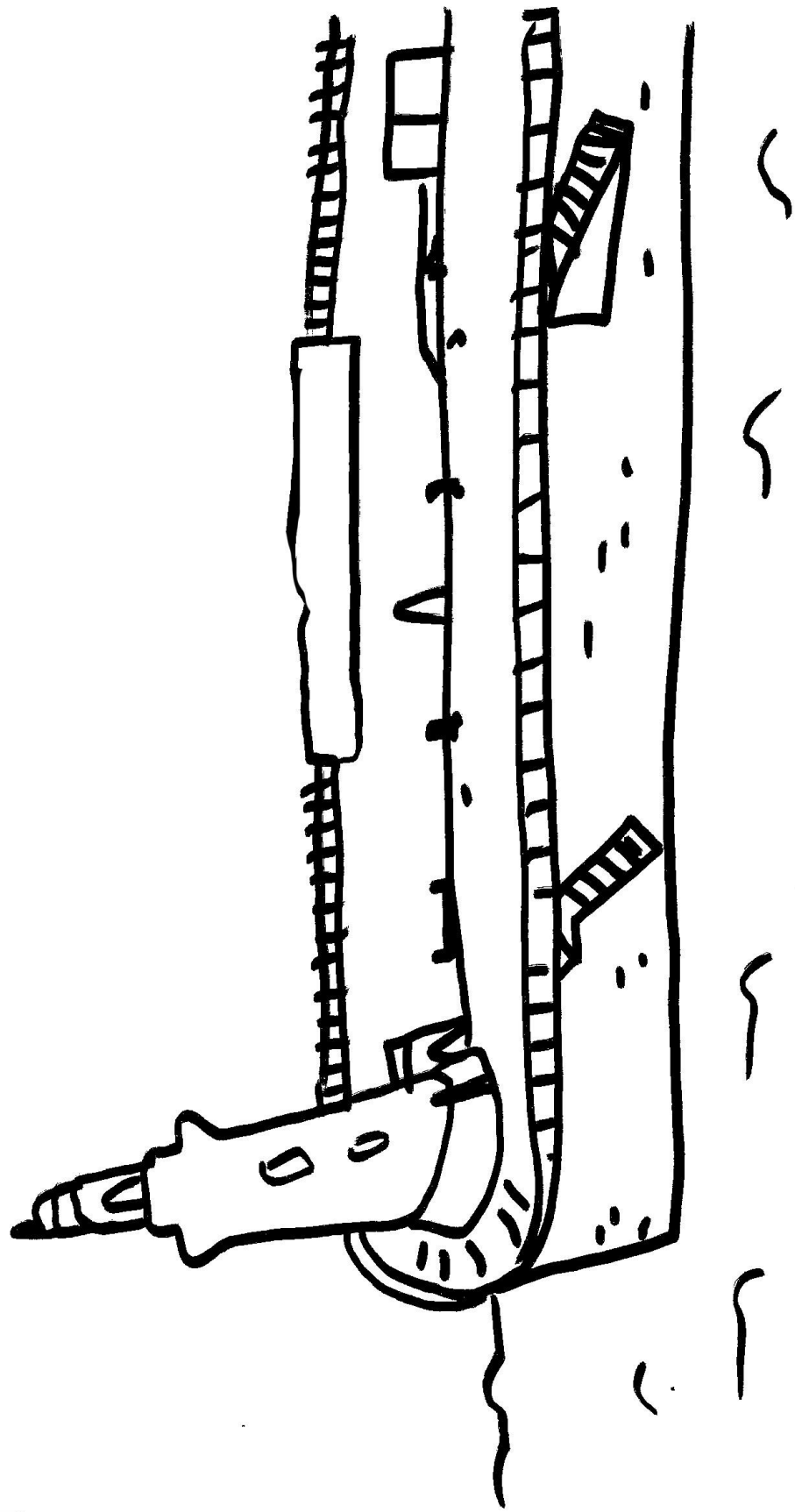




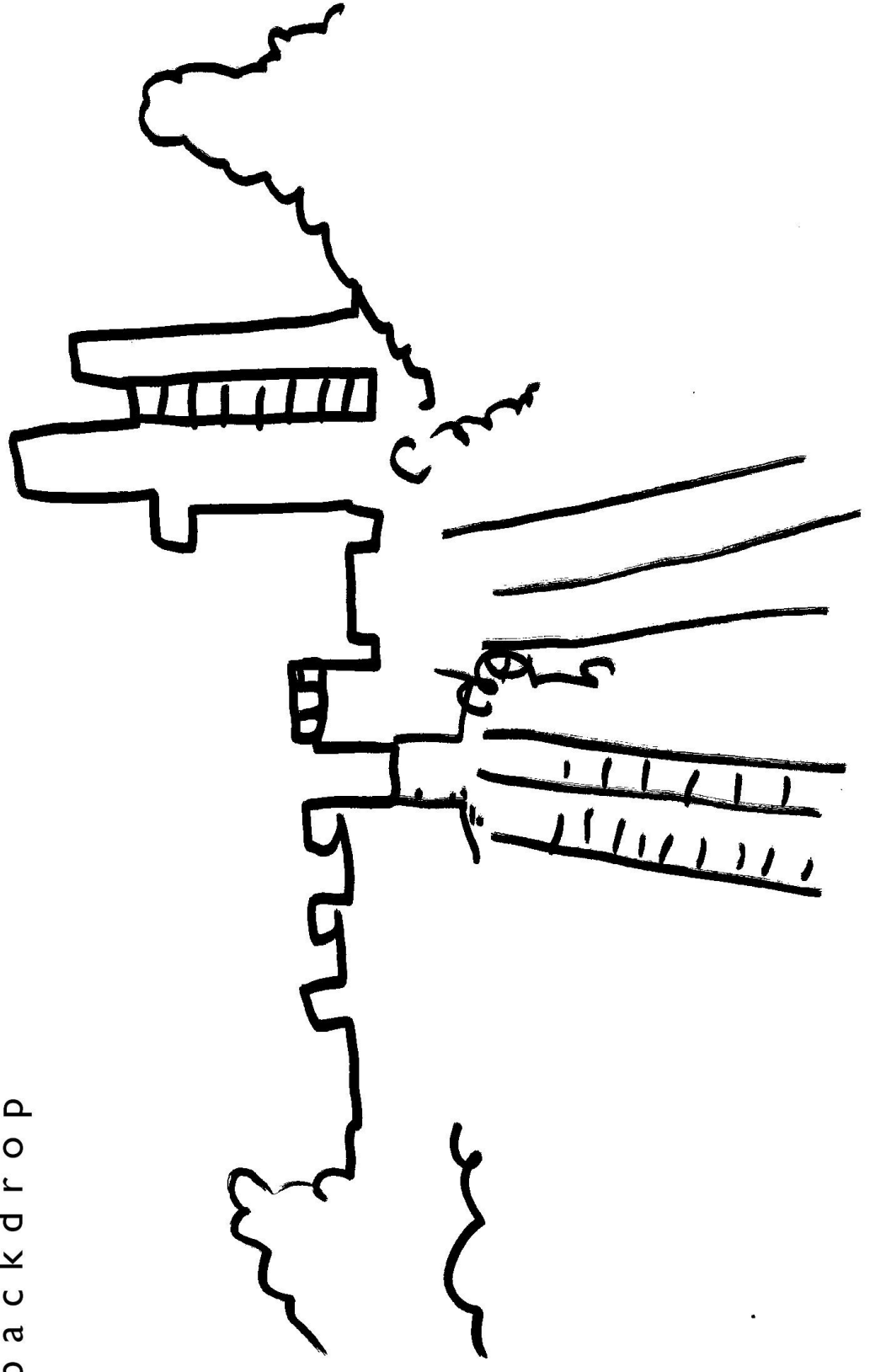
little
critters
colour in and cut
out. fold tabs and
stick into shoebox!



harbour arm
backdrop

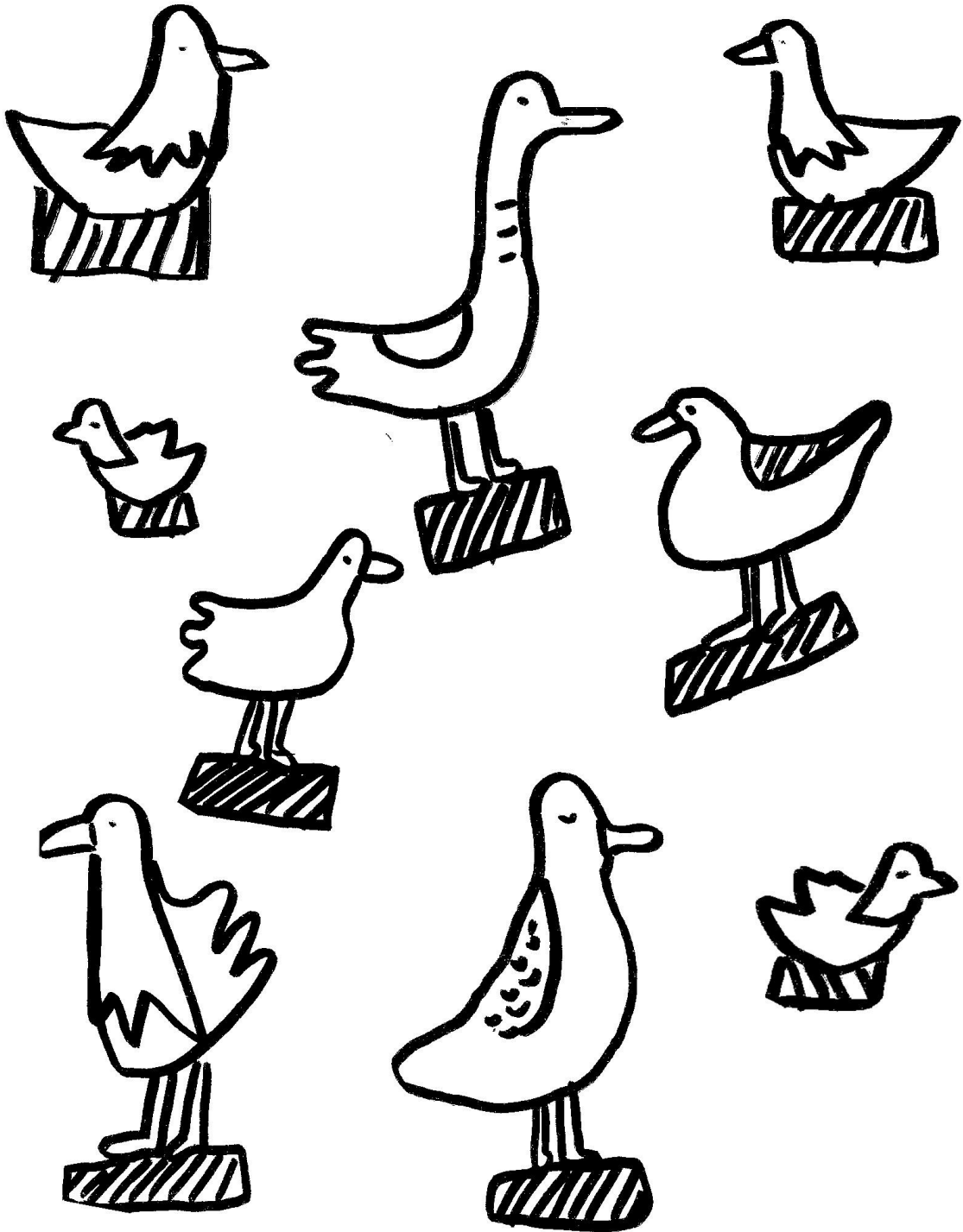


leas lift
backdrop

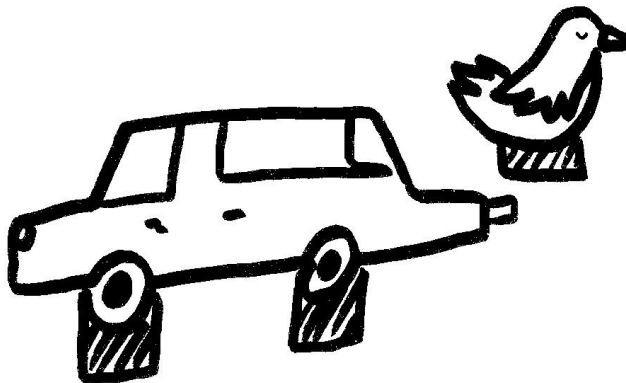
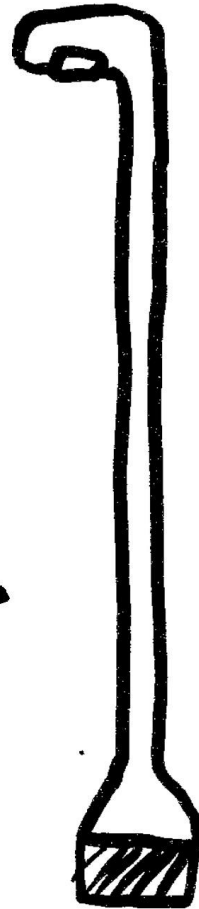
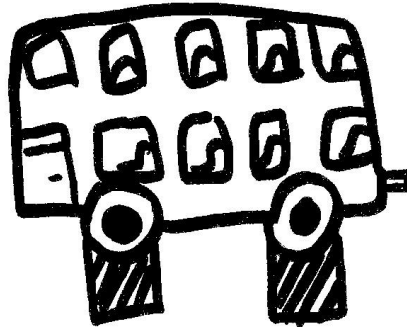
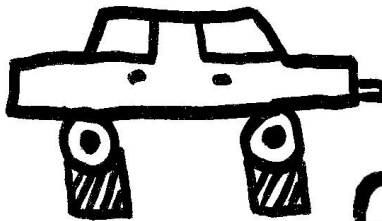
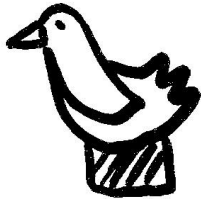
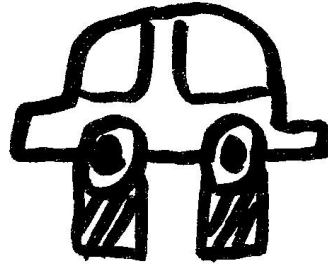
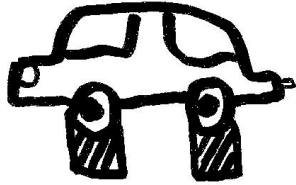
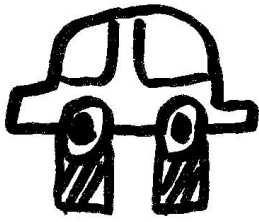


birds!

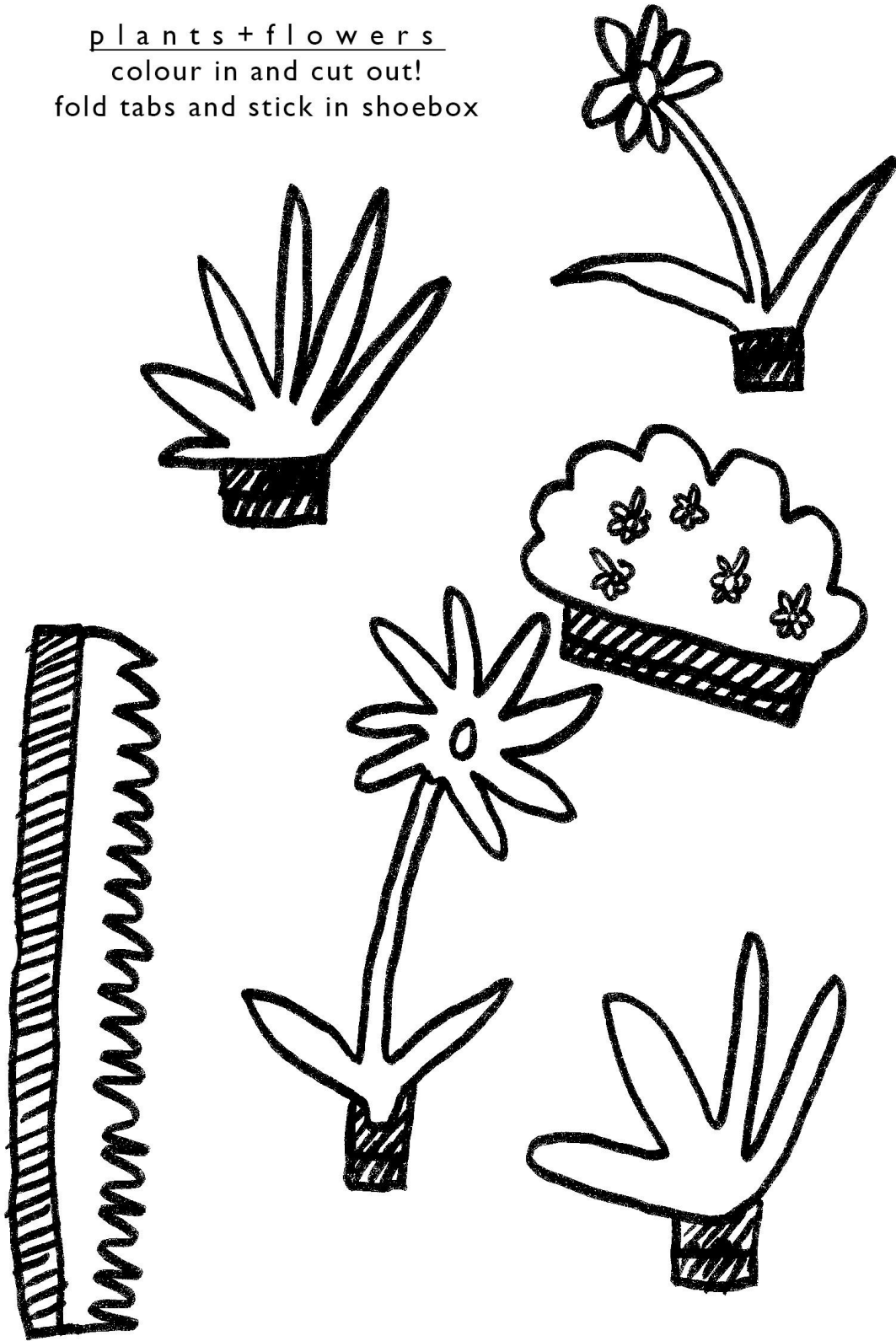
colour in and cut out
fold tabs and stick into shoebox



cars + traffic lights
colour in and cut carefully
fold tabs and stick into place!



p l a n t s + f l o w e r s
colour in and cut out!
fold tabs and stick in shoebox

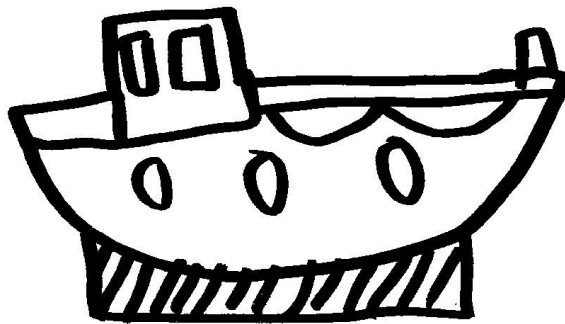
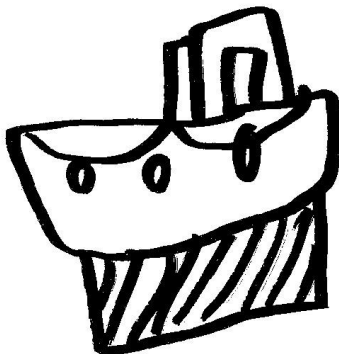
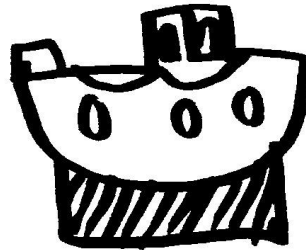
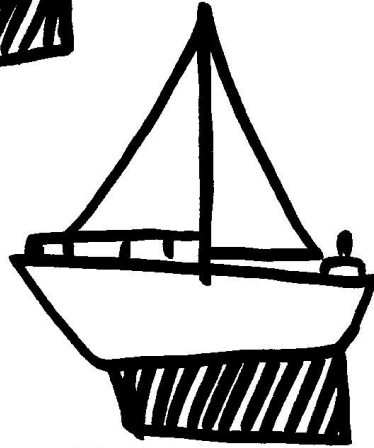
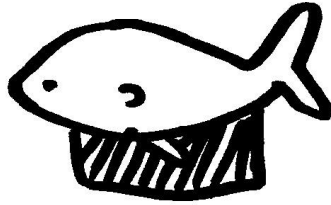


the grand hotel

how many windows do you think there are?

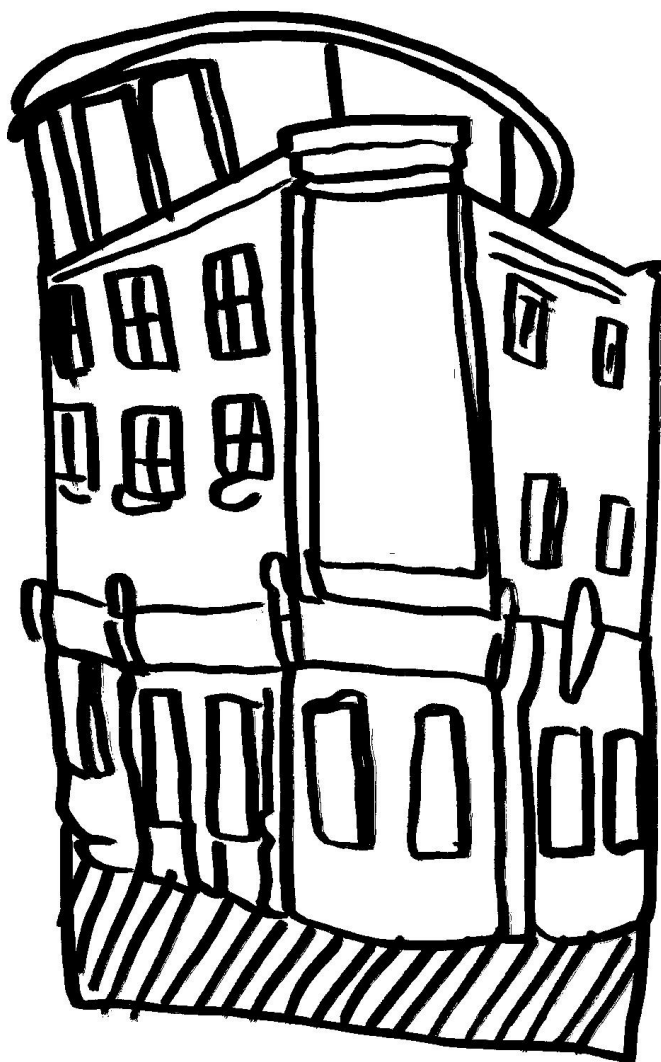
colour and cut out! fold tab and stick into your shoebox





h a r b o u r
colour in and cut out
stick into place in your shoebox

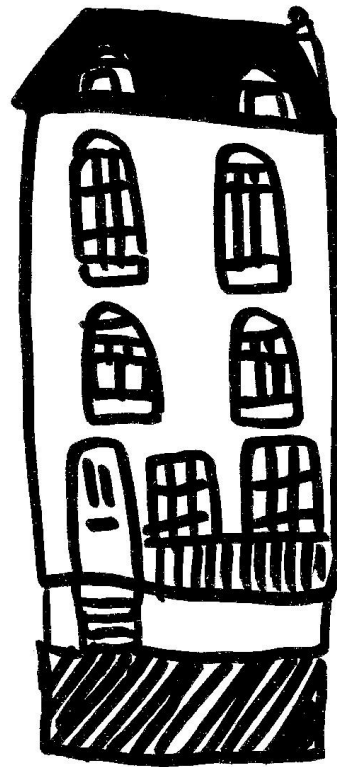
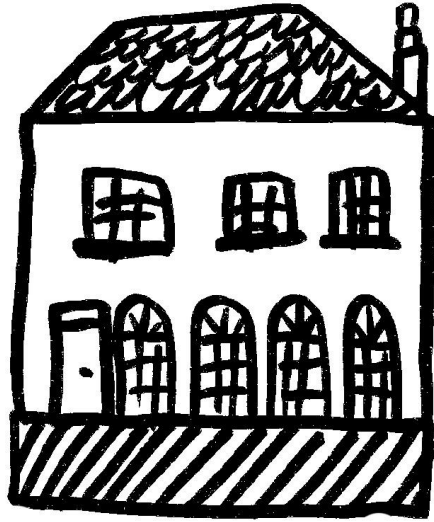
h i g h s t r e e t
michael craig martin painted a
light bulb on this building - can you recreate it?



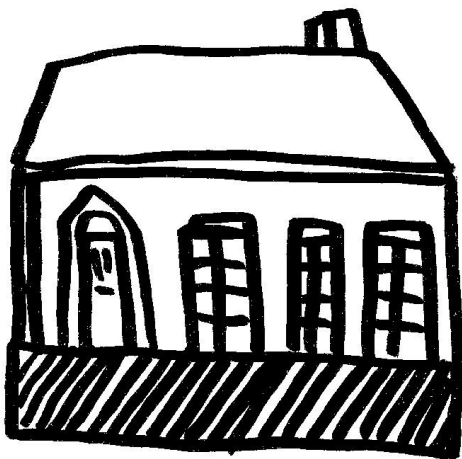
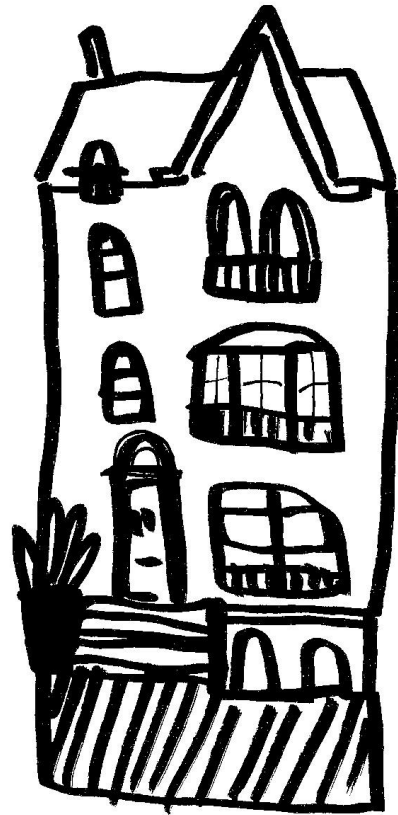
h o u s e s !

cut out and colour in!

fold the tabs and stick in your shoe box

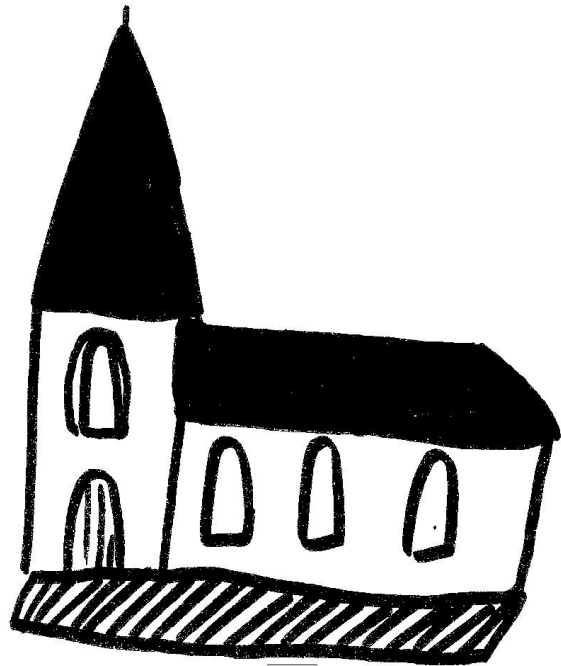
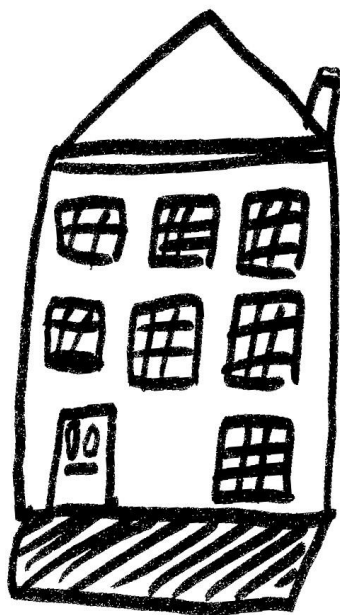


h o u s e s
colour in and cut out
fold tabs and stick into shoebox!



houses

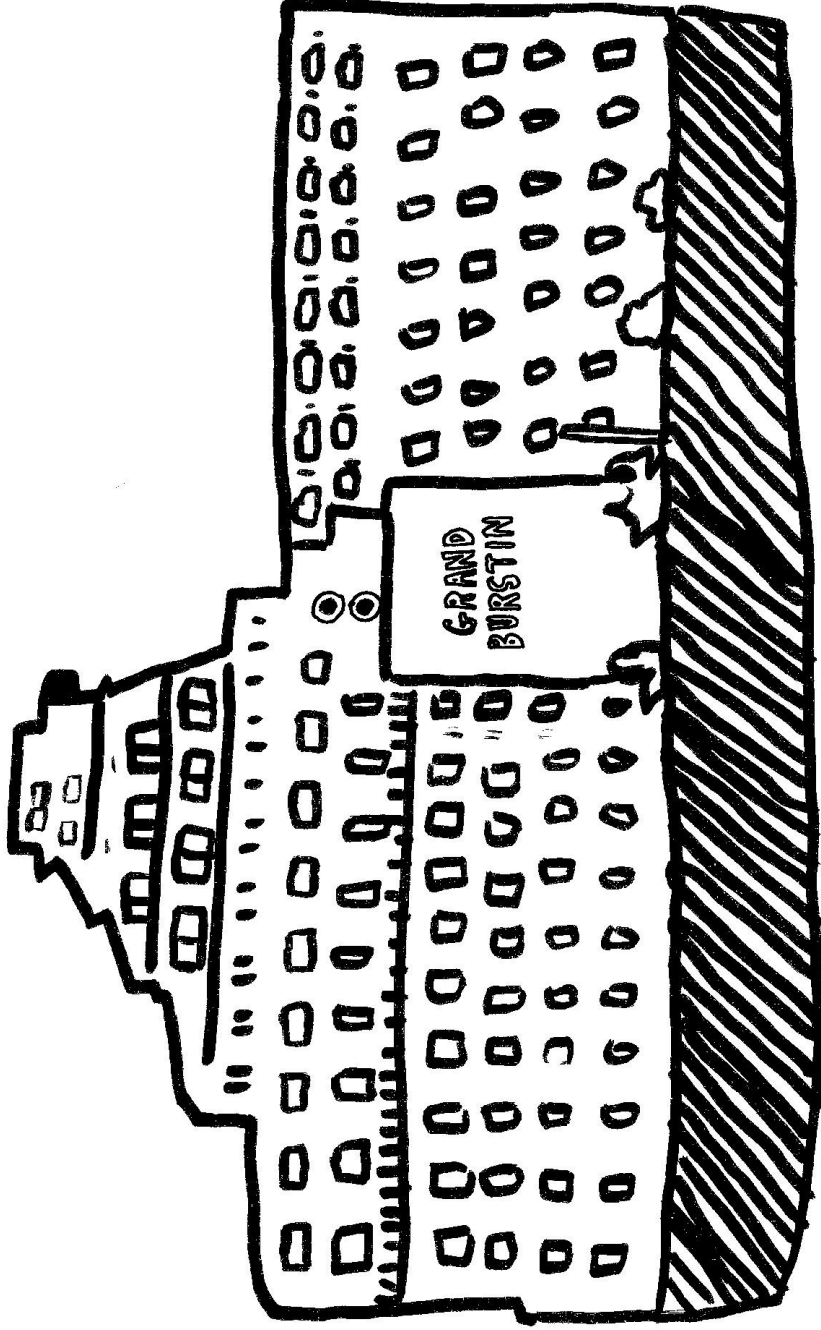
colour in and cut out
fold tabs and stick in shoebox

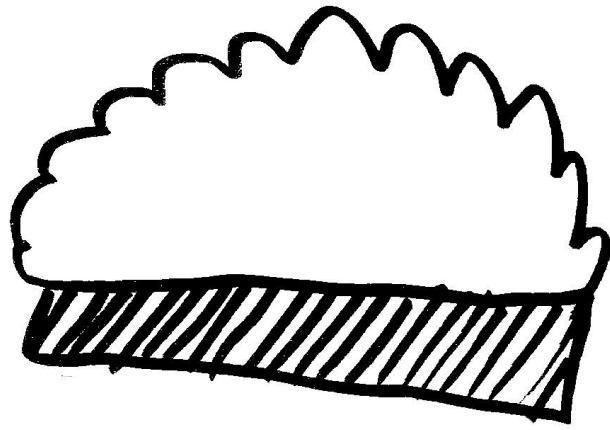


the grand burstin

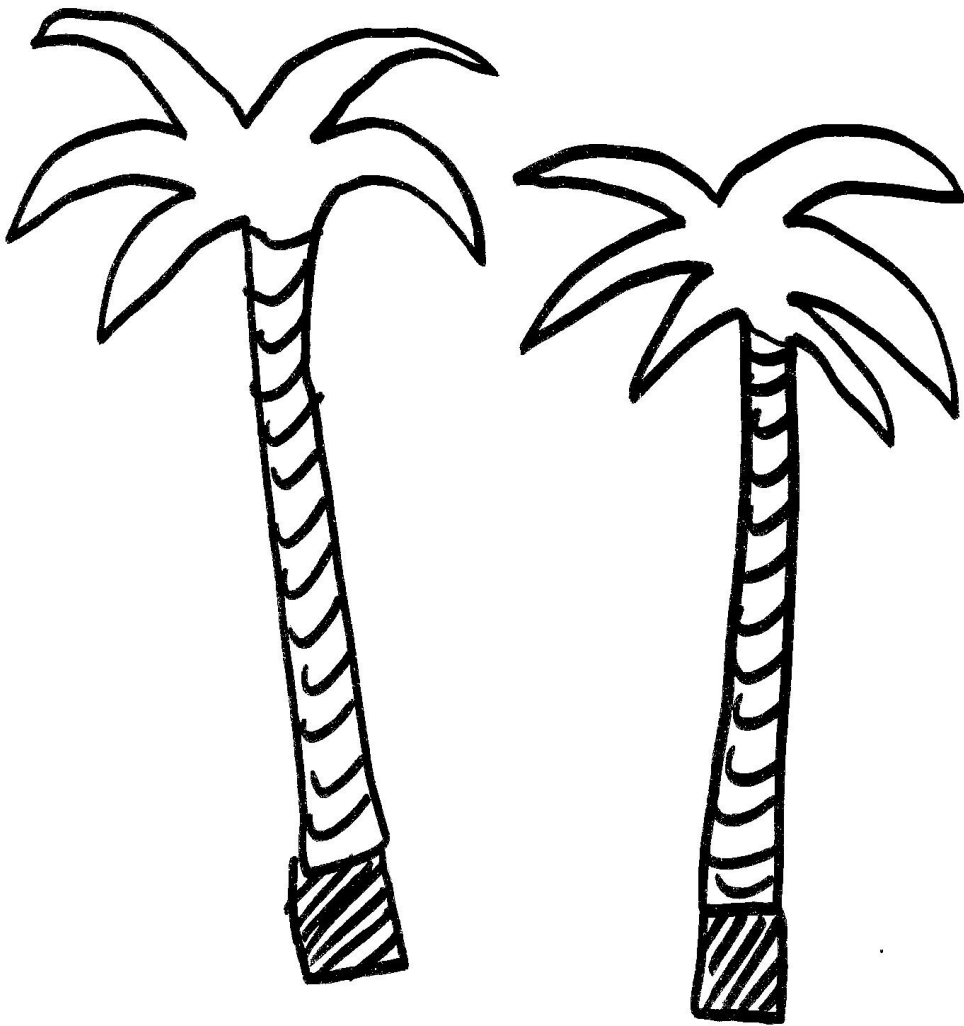
the hotel that looks like a ship

colour and cut out! fold tabs and stick into shoebox

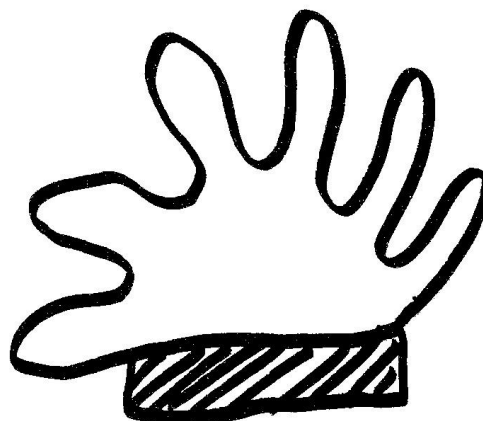
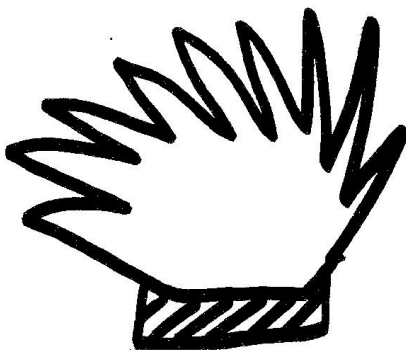
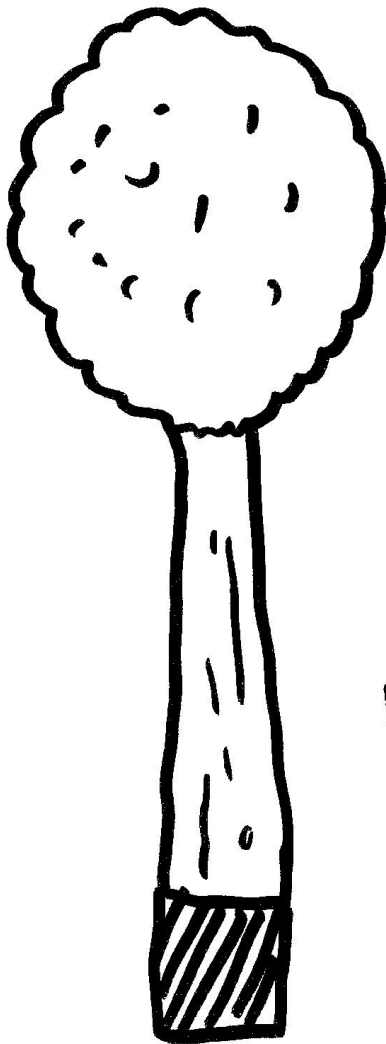




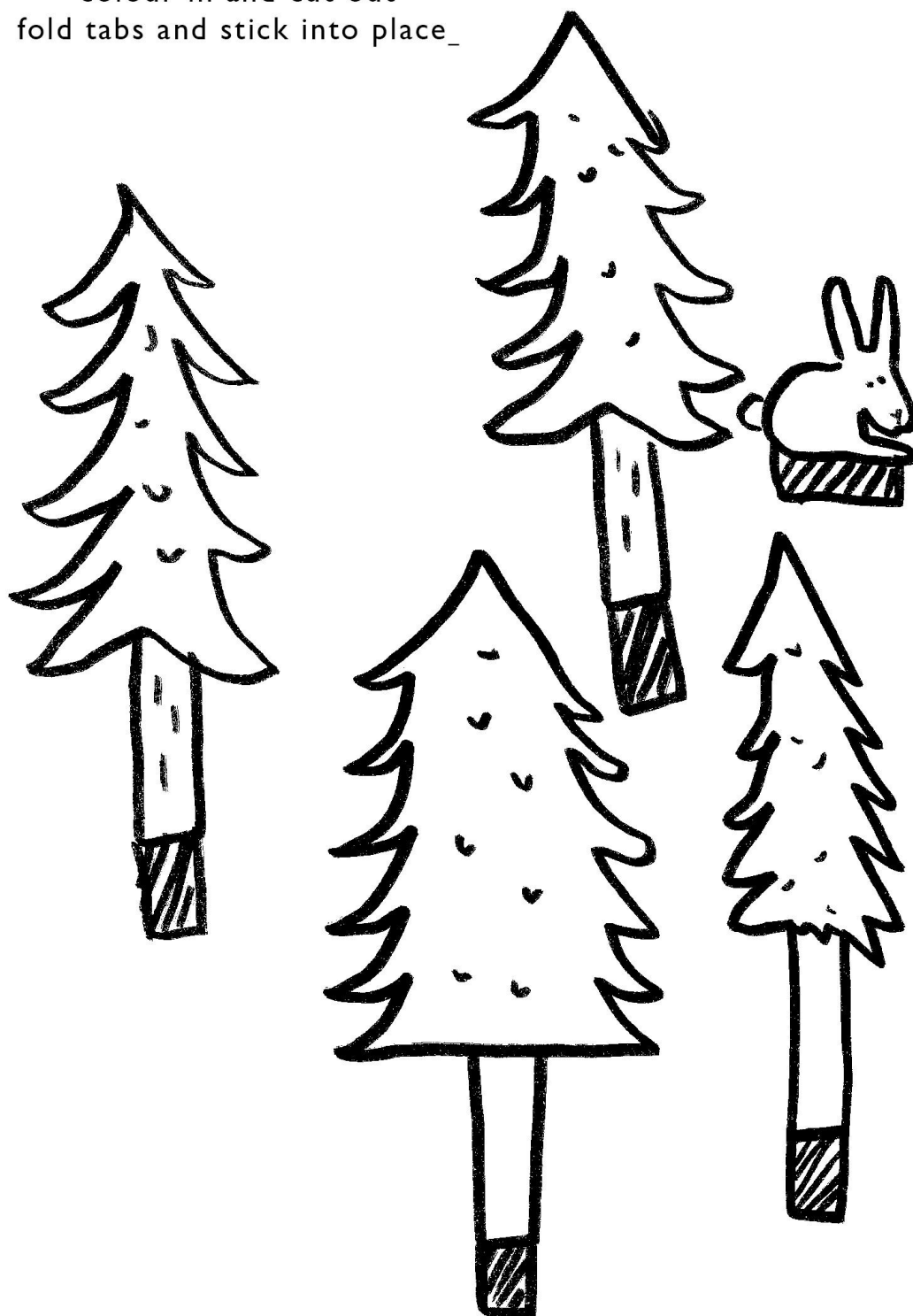
t r e e s
+
b u s h



t r e e s , b u s h e s a n d m a r t e l l o t o w e r
cut out and colour in!
fold the tabs and stick in your shoe box



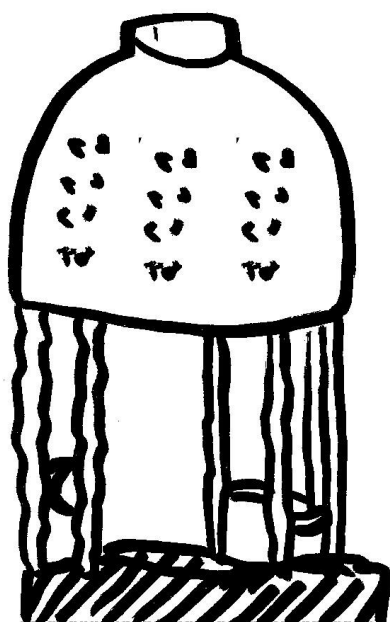
p i n e t r e e s
colour in and cut out
fold tabs and stick into place_



folkestone
triennial 2017
colour in and cut out
fold tabs and stick into place



Richard Woods



Lubaina Himid



leas cliff hall
+
the quarterhouse

